

Phase: 3/4	Subject: Art	Focus: William Morris	Term: Spring
-------------------	---------------------	------------------------------	---------------------

What I should already know?

Building simple repeating patterns and identifying them .
 Creating simple block prints.

Vocabulary

Relief printing	When you carve into a printing block that you then use to press onto paper and make a print.
Positive space	The areas in a work of art that are the subjects or areas of interest.
Negative space	The area around the subjects, or areas of interest.
Pattern	A repeated decorative design.

Skills and techniques

William Morris also created clay tiles with his designs.

Step 1—Press, knead and roll the clay. This will be very difficult at first, but the more you work it, the softer and warmer it will become. Then it will be easier to manipulate (work with).

Step 2—Roll out the clay (as thick as 1 cm) and cut down to about 15cm by 15cm for a tile. Use an old ruler to help you measure this.

Step 3 - Work your design into the tile.

By the end of the unit I should know...

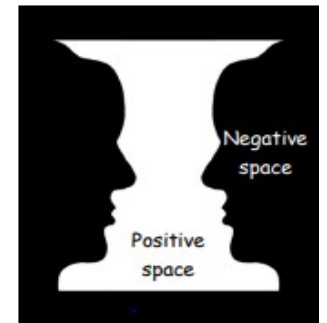
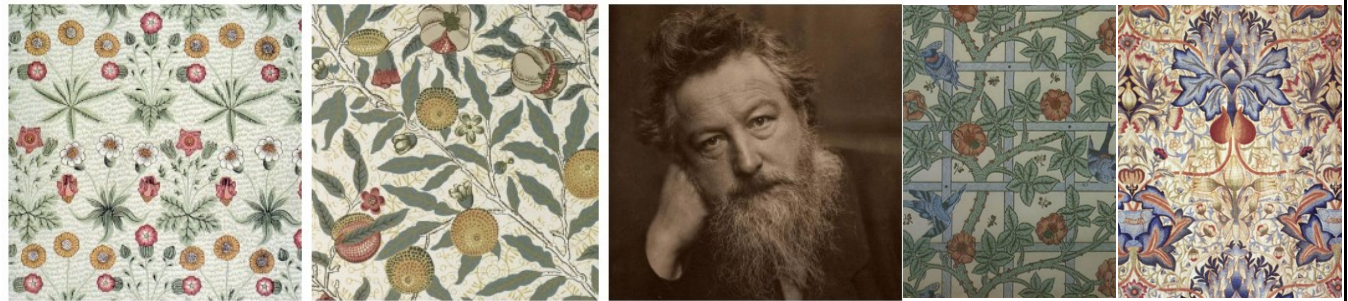
About William Morris and describe his work.
 How to create a printing block inspired by William Morris.
 How to form a clay tile and add design to it.

Knowledge, Artists and Significant works

William Morris is one of the most influential designers of the 19th Century, .
 His worked included wallpaper design and print, furniture , stained glass windows, tiles and tapestries.
 His career in designing started when he decorated his own house in London.

William Morris, who was also an environmental campaigner, created designs of floral patterns (patterns inspired by flowers and plants) which were repeated many times by block printing.

What William Morris did was to make designs of floral patterns (patterns inspired by flowers and plants) that could be repeated many times by block printing techniques on large pieces of paper to make patterned wallpaper .



Skills and techniques

Poly block is a polystyrene based printing material which you can work into using a biro or a pencil.

The areas pushed down on the polystyrene block will show up in white when printed on to white paper.

